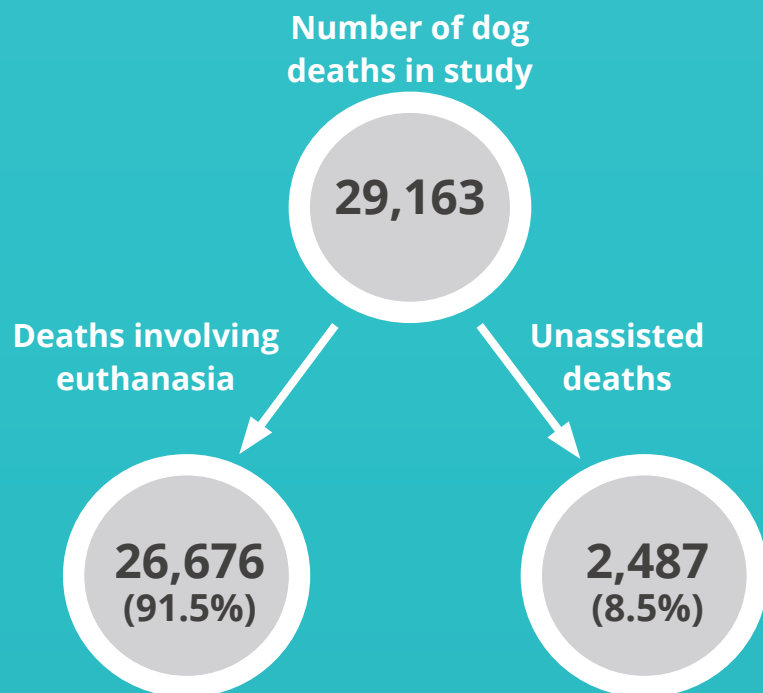
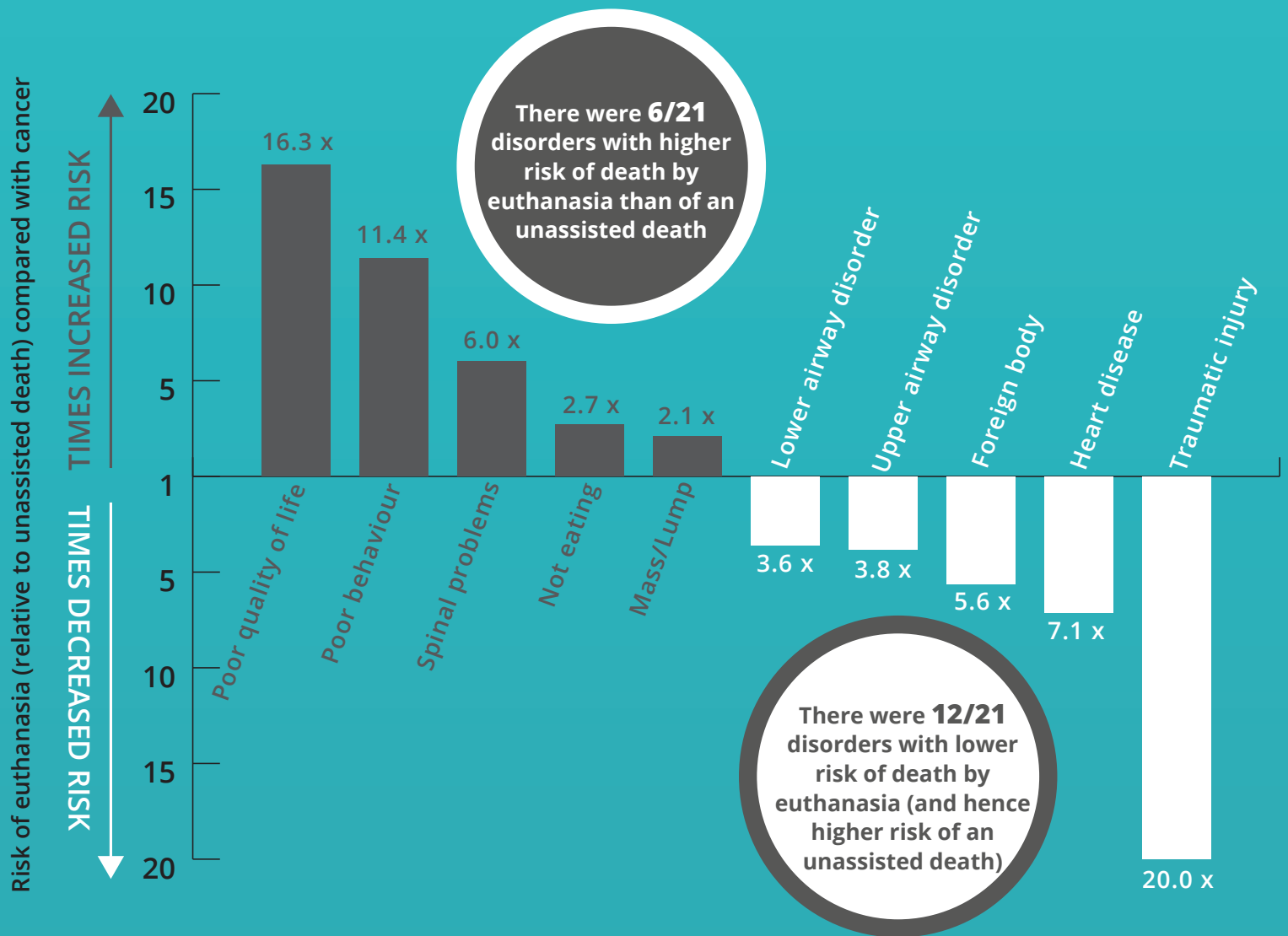


Euthanasia in dogs

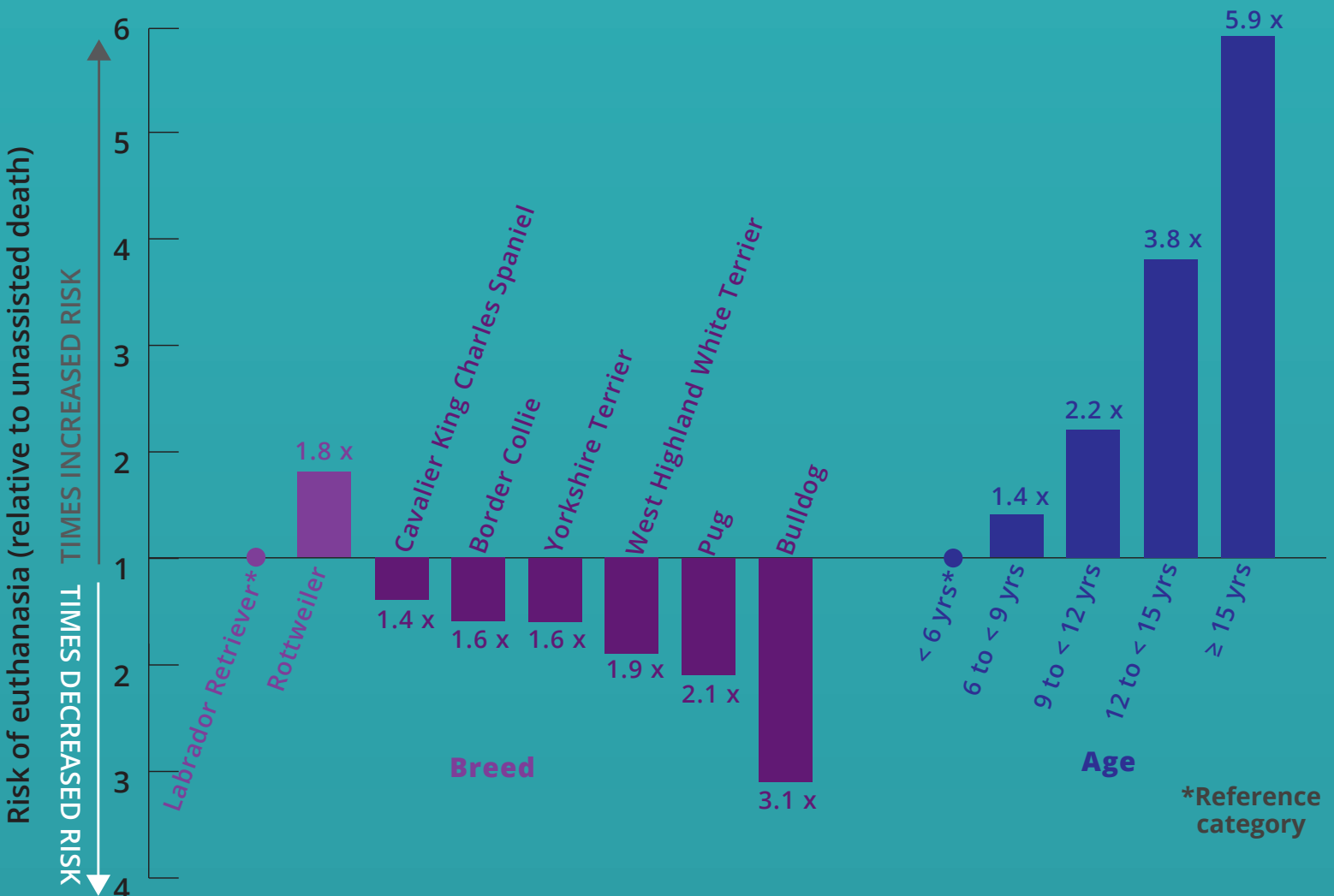
Recurring dog ownership means that many owners must sadly endure the loss of several dogs during a typical human lifetime. Regardless of how a dog dies, the loss of a pet can be particularly distressing for owners. This study aimed to understand more about how dogs die in the UK.



Which disorders are more or less likely to lead to euthanasia compared with an unassisted death?



Does breed and age affect the risk of euthanasia relative to an unassisted death?



CONCLUSIONS:

In over 90% of deaths of dogs, owners opted for euthanasia. Understanding that this is the most common choice of owners in general may help future owners faced with the euthanasia dilemma to come to terms with this decision.

Owners often opt for euthanasia in dogs with poor quality of life. These findings may help owners in similar situations to discuss end-of-life options with their veterinarian.

As dogs become elderly, owners are more likely to opt for euthanasia. This might help owners to have more open end-of-life discussions with veterinarians as their dog ages.

CLICK TO READ

Pegram et al. (2021) "Proportion and risk factors for death by euthanasia in dogs in the UK" Scientific Reports

RVC VetCompass <https://www.rvc.ac.uk/vetcompass> carries out welfare research based on anonymised clinical information shared from over 30% of UK veterinary practices. We are very grateful to the owners and veterinary professionals who contribute to VetCompass research.